



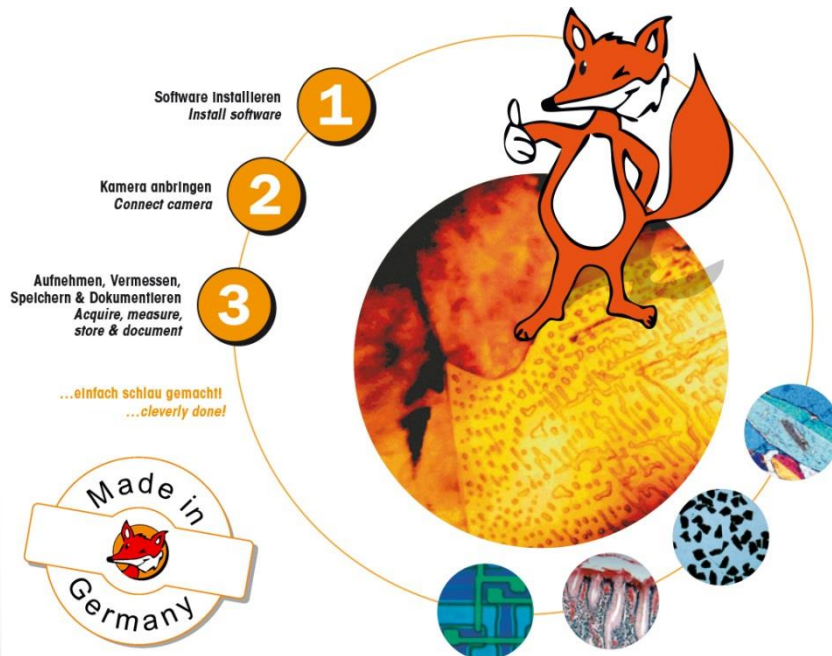
pixel-fox®

Customer Information V7



■ Definition:

- Complete package, consisting of software and hardware
- Large scope of features at a low price
- Easy to install and to use („Plug & Play“)



pixel-fox®



Target groups:

- Price-conscious clients with low budget
- Users who needs *no* database functionality
- User with lower technical requirements for software functions and camera performance (comparing to expensive high-end imaging solutions)
- e.g. industry, biomed, public authorities, education, apprenticeship, schools, universities, surgeries etc.



pixel-fox[®]



Scope of Features :

- 4,92 Mpix Digital Camera 1/2" (USB 3.0) with C-Mount thread (fits to all customary microscopes, macroscopes, endoscopes and objectives with C-Mount adaptor)
- Software for camera settings, image acquisition and image measuring
- Stage micrometer
- USB Dongle
- USB Software-Stick
- Installation manual



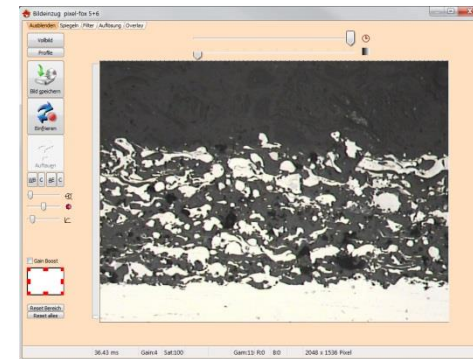
pixel-fox®



■ Software Features:

1. Camera Settings / Image Acquisition:

- Huge & fast live image with adjustable resolutions
- Automatic functions for exposure time, white balance and shading correction
- Settings for colour saturation
- Centric selectable display window (field of view)
- Full screen mode for live image
- Focus indicator (sharpness controller)
- Mirroring (horizontal + vertical)
- Sharpen (in 3 steps)
- Image archiving in -bmp, -jpg, -png and pixel-fox file format
- All settings can be saved in „profiles“
- Import of existing image files also possible!
- image sources with TWAIN driver are provided by pixel-fox software



pixel-fox[®]

Vollbild
Profil

Bild speichern

Einfrieren

Auftauen

WB C AE C

Gain Boost

Reset Bereich
Reset alles

Fadenkreuz

- Fadenkreuz sichtbar
- Fadenkreuz aufnehmen
- Sensor Mitte
- Livebild Mitte

Linienfarbe 9

Überlagerung

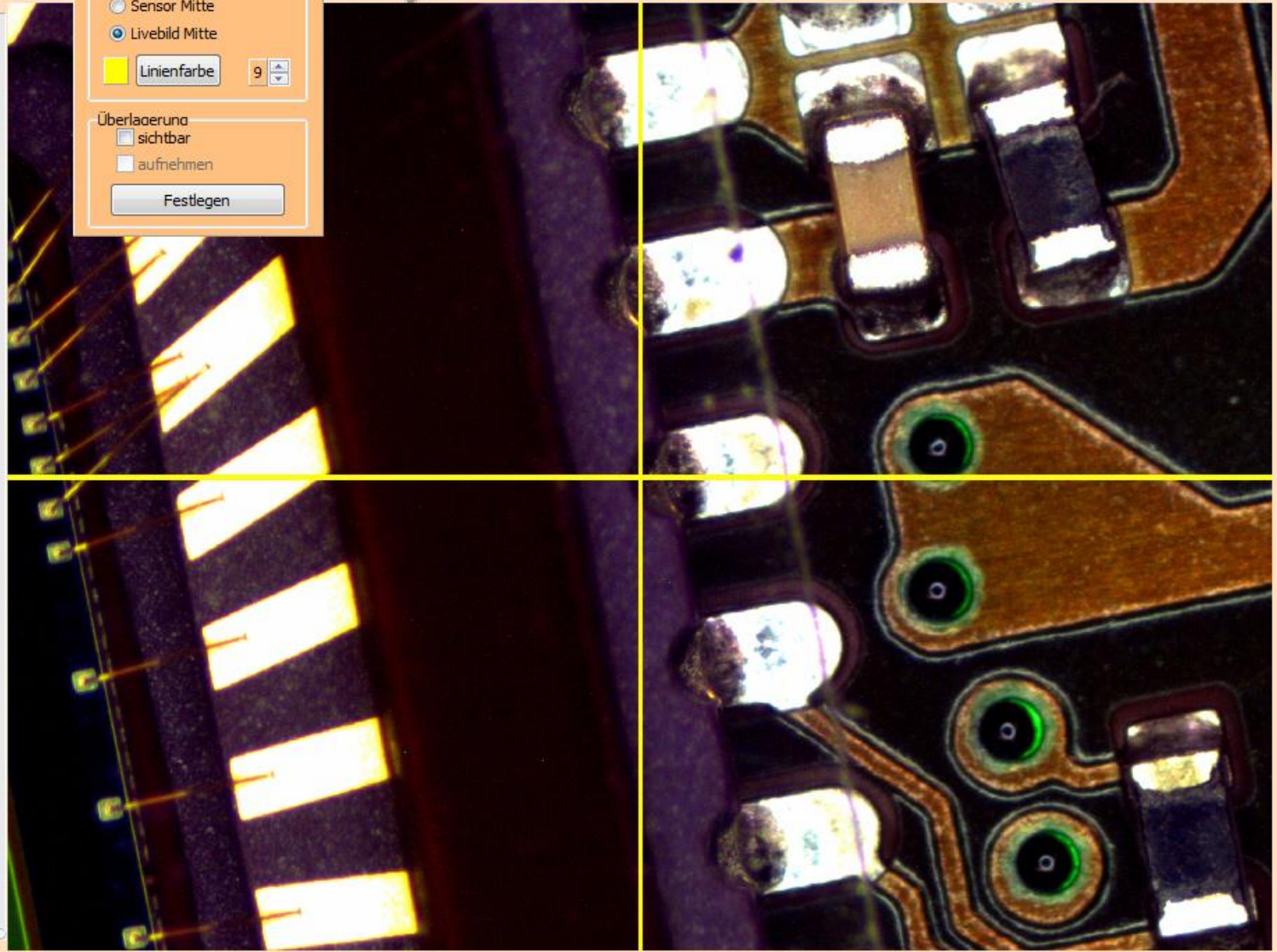
- sichtbar
- aufnehmen

Festlegen

Horizontaler Slider

Vertikaler Slider

Uhr-Symbol





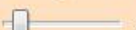

Vollbild
Profile


Bild speichern


Einfrieren


Auftauen

WB C AE C

Gain Boost



Reset Bereich
Reset alles

Schärfe

- Nicht nachschärfen
- Leicht nachschärfen
- Stark nachschärfen

Shading Korrektur
 Artefaktfilter

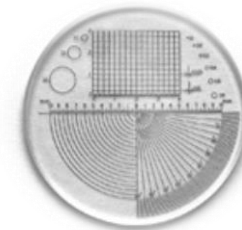
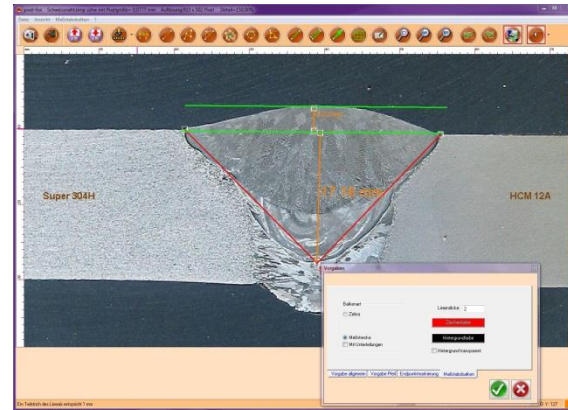




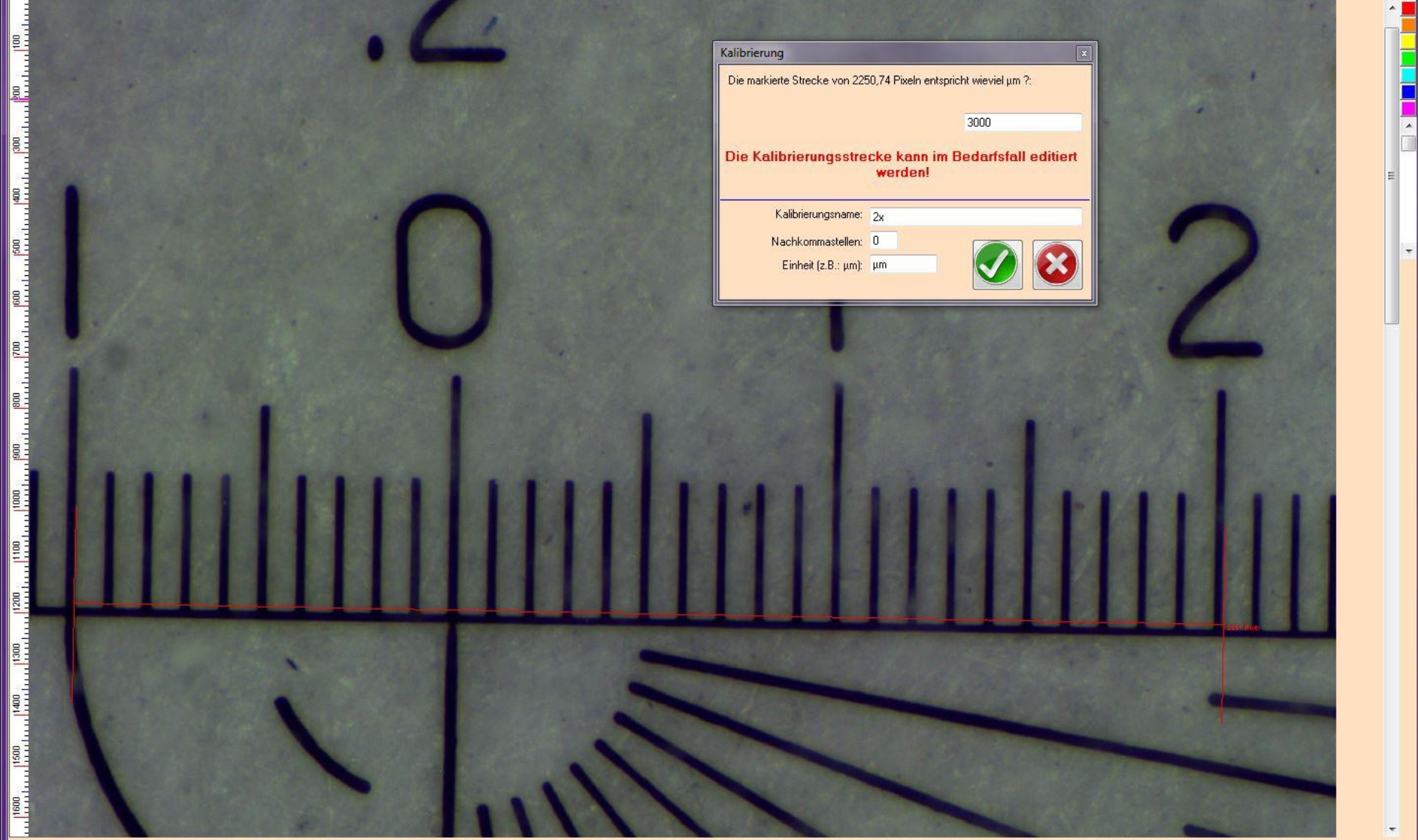
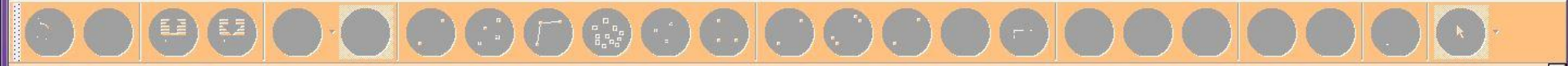

■ Software Features:

2. Image Measuring:

- Lines (point to point and polygonal)
- Circles / Radii
- Area and circumference
- Angles
- Drop perpendicular
- Online measurement value preview
- Show ruler
- parallel guide lines
- Show crosshairs (display adjustable)
- Calibrations (can be stored)
- Scale bar
- Raster as overlay
- Drawing of arrows, help lines and text information
- Layer technology (till final file saving)
- Colours, fonts and lines adjustable
- Digital loupe
- Using the pixel-fox[®] camera in other programmes via TWAIN drivers
- „Snap up“ measurement points
- Saving work sessions



pixel-fox[®]



Kalibrierung

Die markierte Strecke von 2250,74 Pixeln entspricht wieviel μm ?:

Die Kalibrierungsstrecke kann im Bedarfsfall editiert werden!

Kalibrierungsname:

Nachkommastellen:

Einheit (z.B.: μm):



pixel-fox LP.cbr mit Pixelgröße= 0,0117 mm Auflösung:754 x 568 Pixel Detail=100,00%

Datei Ansicht Maßstabsbalken ?

Probe 1234

r=2,994 mm
D=5,989 mm

0,496 mm
0,539 mm
0,504 mm

Beschriftung| Text eingeben dann 1.Punkt=Linke Maustaste gedrückt halten bis 2.Punkt=Maustaste loslassen

Auto-Edit



■ Software Features:

3. Dokumentation:

- Reportgeneration by MS Excel

4. General:

- Program available in Englisch, German, French, Italian, Polish and Spanish language
- Incl. context-related online help English/German (F1 Key)
- Incl. PDF installation manuals in en, de, fr, it, es, nl, cz and pl
- Licencing with the proven way of USB Dongle
- Software delivered by USB-Stick



pixel-fox®



■ System Requirements:

- IBM-compatible PC with Pentium or AMD CPU with min. 1,5 GHz
- min. 1GB RAM
- Graphics card with own memory min. 128MB (no shared-memory!), recommendation: PCIeexpress from AMD / Nvidia plus DirectX software stand (as of August 2009)
- Mainboard with full USB 3.0 support and USB 3.0 High Powered Port (500 mA) interface (if applicable refit equivalent plug-in card)
- Operating system: Windows 7, 8, 8.1 and 10

Note:

Local administration rights are required during installation.



pixel-fox[®]



■ User Support:

- Installation manuals as PDF (multilingual)
- Integrated, context-related Online help (F1 Key)
- eMail support – free of charge (Web form)



pixel-fox®: Support for technical questions - Windows Internet Explorer

http://www.pixel-fox.com/en/support.html

pixel-fox®: Support for technical questions

Home

Support

For commercial/price questions or interest in a product presentation or a quotation, please contact your nearest [pixel-fox®-Dealer](#).

Only for technical questions regarding **pixel-fox®**, please contact our imaging specialists using the following form.
(fields marked with * are compulsory).

* Company:

First Name:

* Name:

Department:

* Street:

* Postcode:

* City/Town:

* Country:

* E-Mail:

* **pixel-fox®** version:

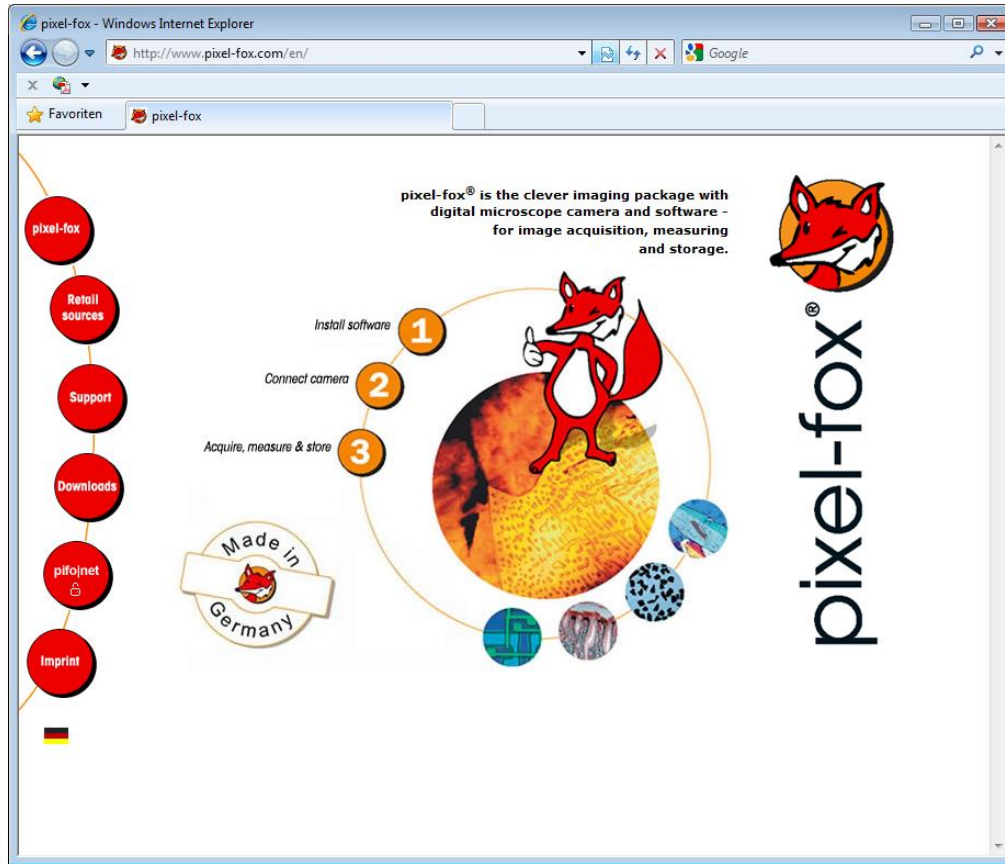
* Camera version:

* Description of software defect:

pixel-fox®



- Website www.pixel-fox.com



pixel-fox[®]



pixel-fox[®]

dhs Dietermann & Heuser Solution GmbH
Herborner Str. 50
35753 Greifenstein-Beilstein (GERMANY)

Fon +49 2779 91200
Fax +49 2779 912099
support@pixel-fox.com

(Subject to change without notice)

Represented by:

 **WELDNDT**
EQUIPAMENTOS E SERVIÇOS
www.weldndt.pt